

# HP-2 / HP-4 Wall Wash LED Driver Replacement Instructions

## Overview

### NOTES

- All power connections should be installed according to local/national codes by a Certified Electrician.
- This installation requires **proper support** as each luminaire is being installed.
- **DO NOT attempt to join luminaires together on the floor.** Damage may result when lifted.



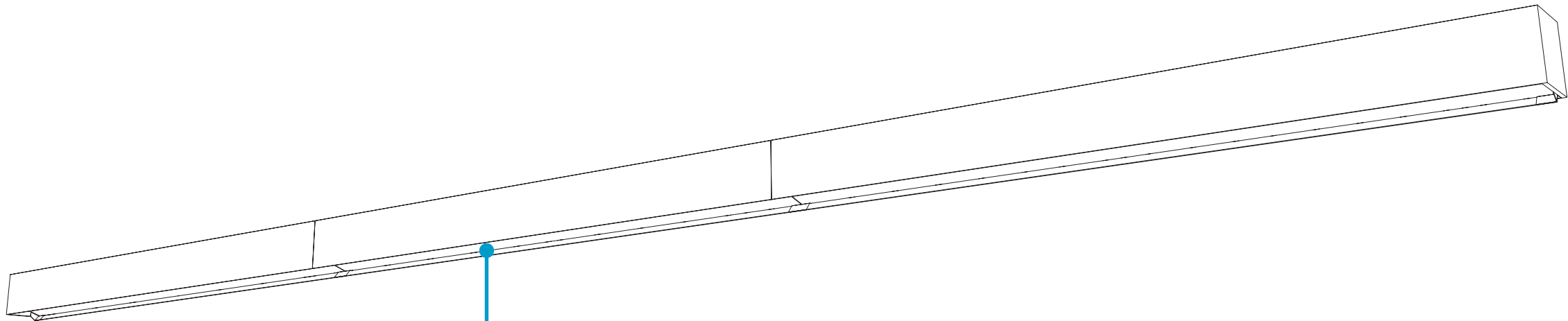
HELPFUL  
VIDEOS



0-10V  
Dimming



Driver  
Replacement

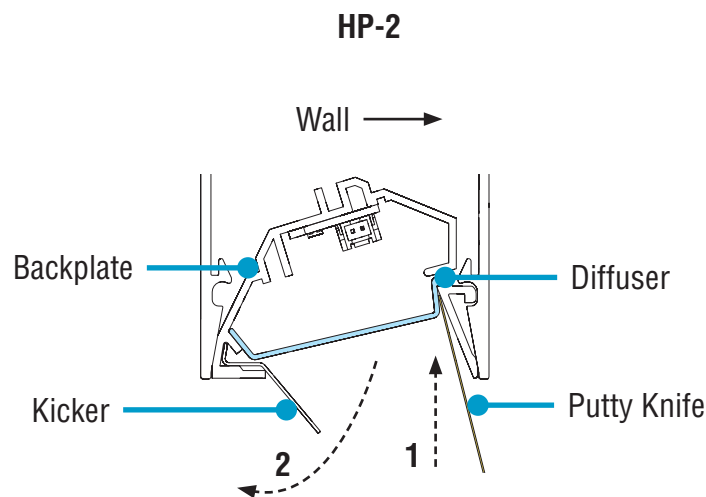
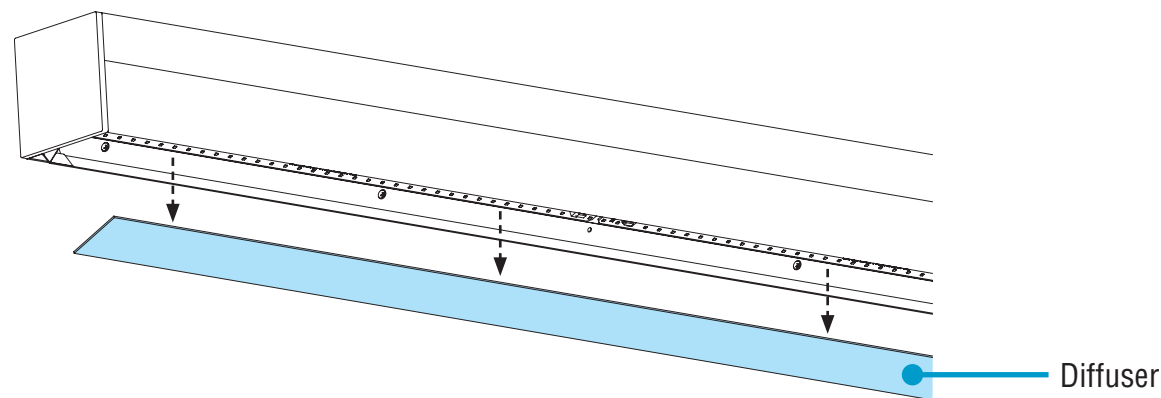


LED Driver Replacement ▶  
**Pages 2-4**

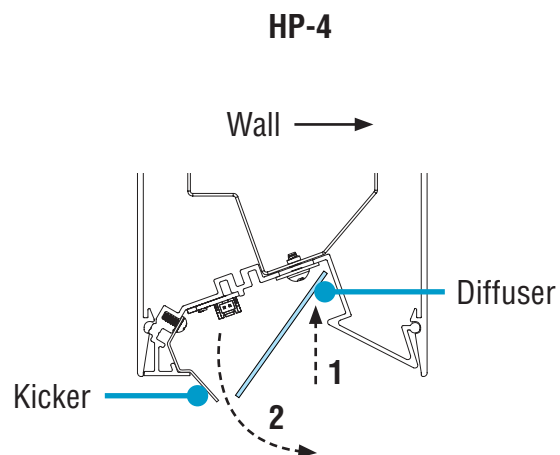
# HP-2 / HP-4 Wall Wash LED Driver Replacement Instructions

## Step 1 - Opening Luminaires

### A. Remove Diffuser

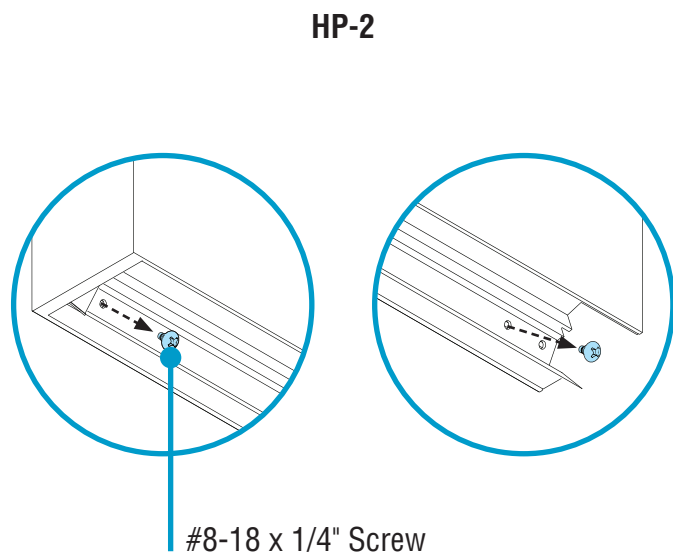
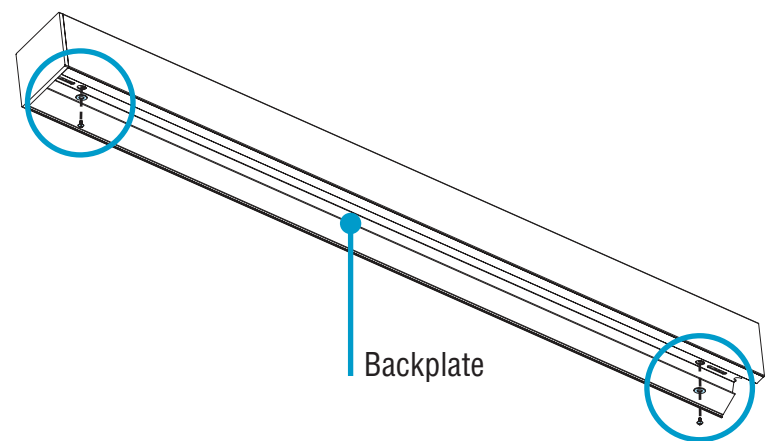


- Turn power off to luminaire.
- **1.** Slide putty knife between the backplate and diffuser.
- **2.** Carefully separate diffuser from backplate.
- Carefully remove all diffusers.
- Set aside all diffusers to prevent from getting dirty or damaged.
- Ensure diffuser can be clearly identified back to corresponding luminaire.

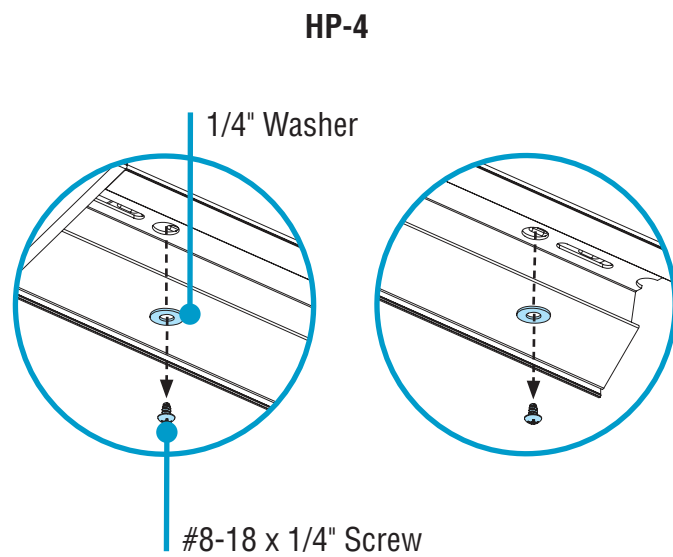


- Turn power off to luminaire.
- **1.** Push bottom edge of the diffuser into backplate.
- **2.** Slide diffuser out of backplate.
- Carefully remove all diffusers.
- Set aside all diffusers to prevent from getting dirty or damaged.
- Ensure diffuser can be clearly identified back to corresponding luminaire.

### B. Release Backplate



- Release backplate from luminaire body by removing the #8-18 x 1/4" screw from both ends of the luminaire.
- Disconnect harness and shunt from LED engine.
- **CAUTION:** Set these screws aside. Do not lose.

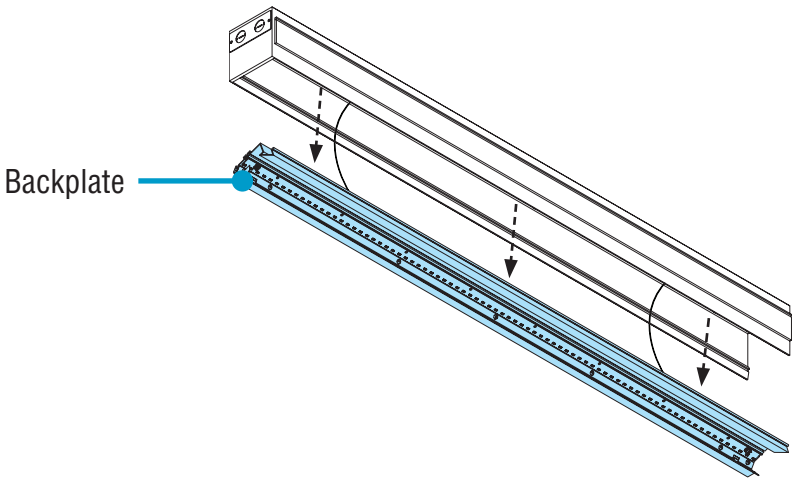


- Release backplate from luminaire body by removing the #8-18 x 1/4" screw and 1/4" washer from both ends of the luminaire.
- Disconnect harness and shunt from LED engine.
- **CAUTION:** Set these screws and washers aside. Do not lose.

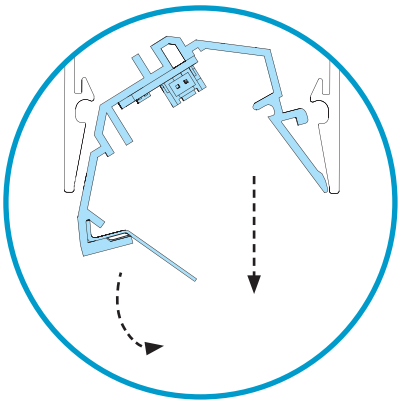
# HP-2 / HP-4 Wall Wash LED Driver Replacement Instructions

## Step 2 - Replace Driver

**A. Remove Backplate**

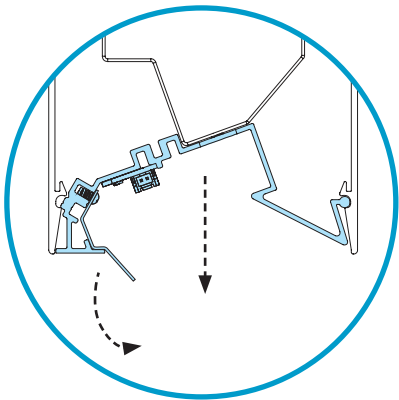


HP-2



- Remove backplate by rotating then lifting **down and out** of the luminaire body.
- Keep backplate hanging with safety cables connected.

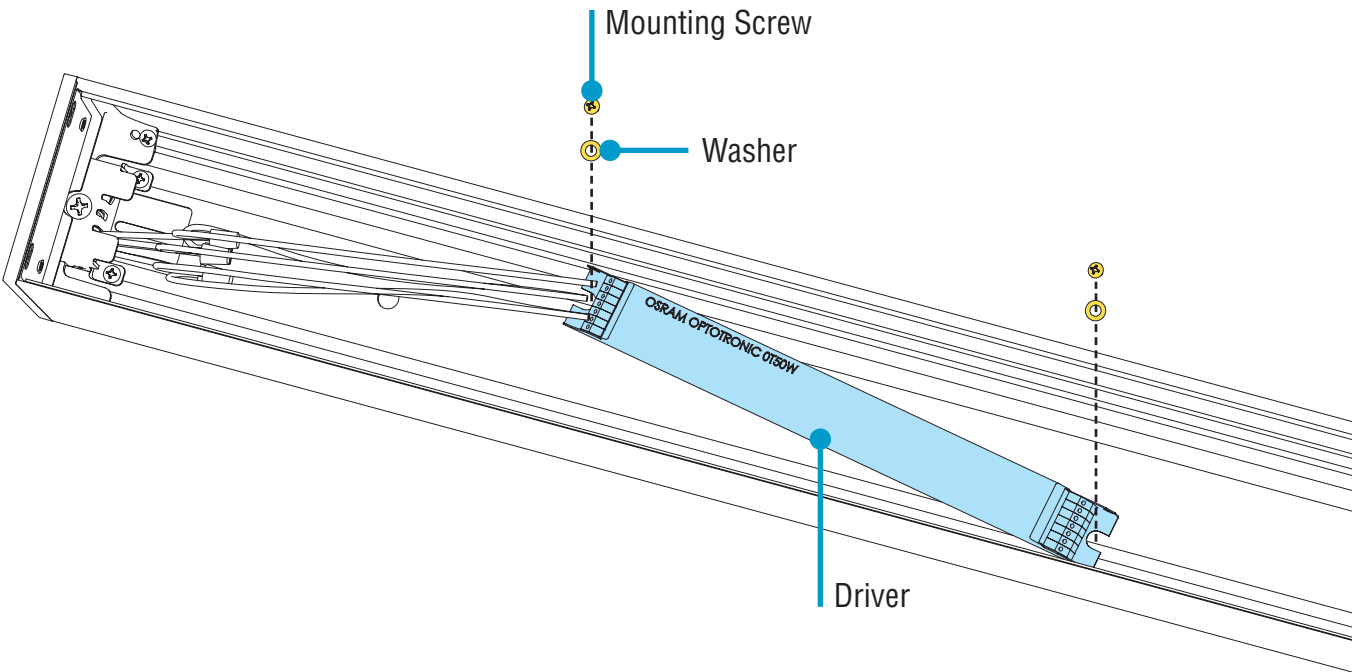
HP-4



- Remove backplate by rotating then lifting **down and out** of the luminaire body.
- Keep backplate hanging with safety cables connected.

**B. Replace Driver**

WIRING LEGEND		
Black	Hot	Line Voltage
White	Neutral	Line Voltage
Green	Ground	
Pink	Dimming	0-10V DC
Purple	Dimming	0-10V DC



- Remove mounting screws and washers from driver.
- Disconnect all electrical connections from driver.
- Remove old driver and replace with new driver.
- Reconnect all electrical connections to driver.
- Replace washers and mounting screws.



0-10V  
Dimming

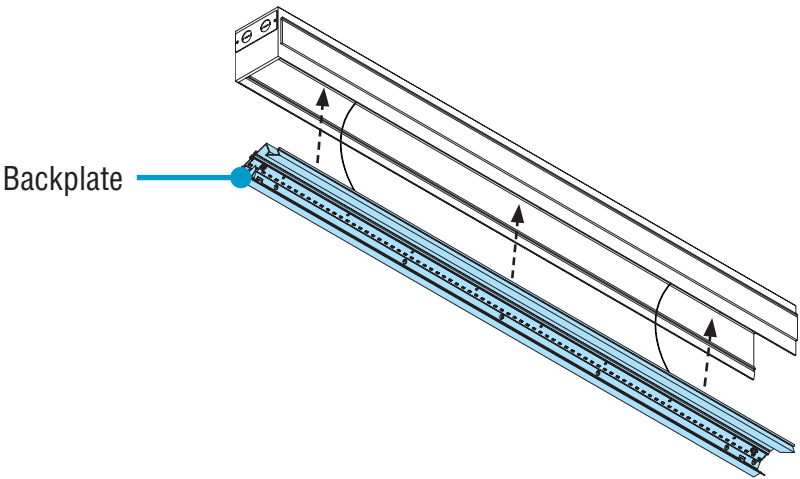


Driver  
Replacement

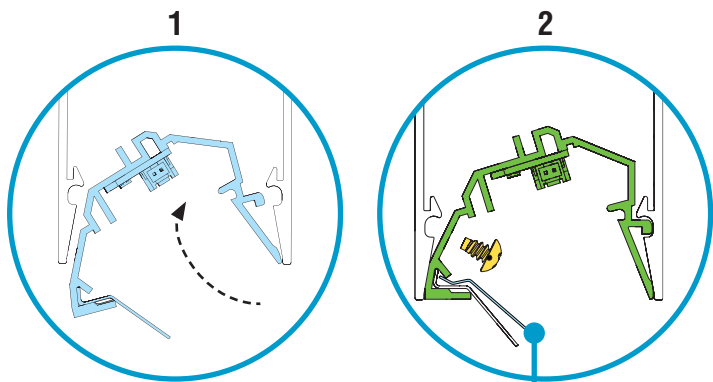
# HP-2 / HP-4 Wall Wash LED Driver Replacement Instructions

## Step 2 - Replace Driver

### C. Replace Backplate



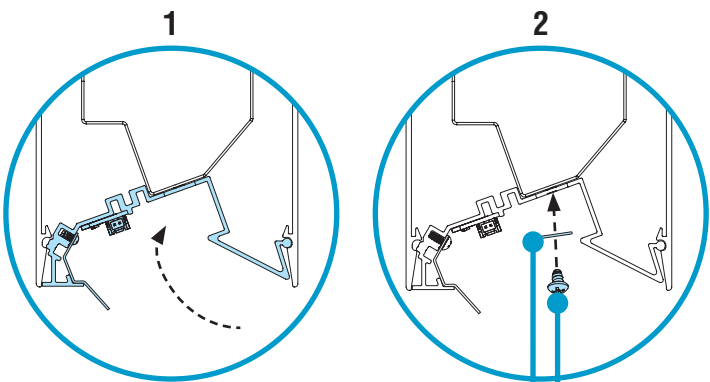
HP-2



Joint Cover Plate

- 1. Carefully reinstall backplate into luminaire by inserting and rotating.
- 2. Install joint cover plate by inserting into backplate and installing two #8-18 x 1/4" screws at the joint.

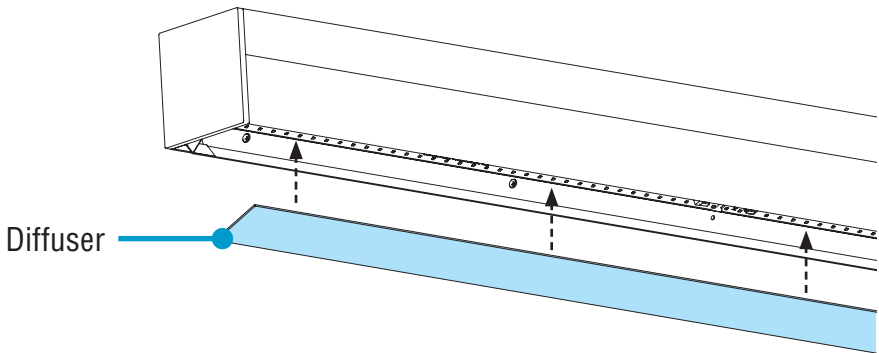
HP-4



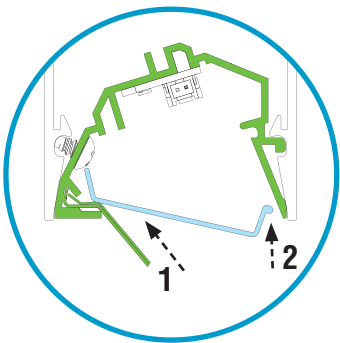
1/4" Washer (provided)  
#8-18 x 1/4" Screw (provided)

- 1. Carefully reinstall backplate into luminaire by inserting and rotating.
- 2. Install 1/4" washer and #8-18 x 1/4" screw to backplate at both ends of luminaire.

### D. Replace Diffuser

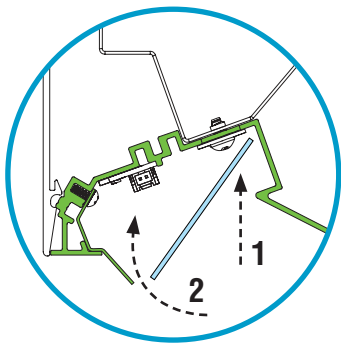


HP-2



- **CAUTION:** Wear gloves to keep diffuser surface clean.
- **CRITICAL:** Be sure to install correct diffuser to its corresponding luminaire ID.
- Install diffusers into luminaire body, ensuring they are in place.
- 1. Slide side of diffuser without a notch into the luminaire.
- 2. Push side of diffuser that has a notch until click sound is heard.
- Turn power on to luminaire.

HP-4



- **CAUTION:** Wear gloves to keep diffuser surface clean.
- **CRITICAL:** Be sure to install correct diffuser to its corresponding luminaire ID.
- Install diffusers into luminaire body, ensuring they are in place.
- 1. Reinstall diffuser by pushing right side of diffuser into backplate.
- 2. Push left side of diffuser until it lays flat on the backplate.
- Turn power on to luminaire.